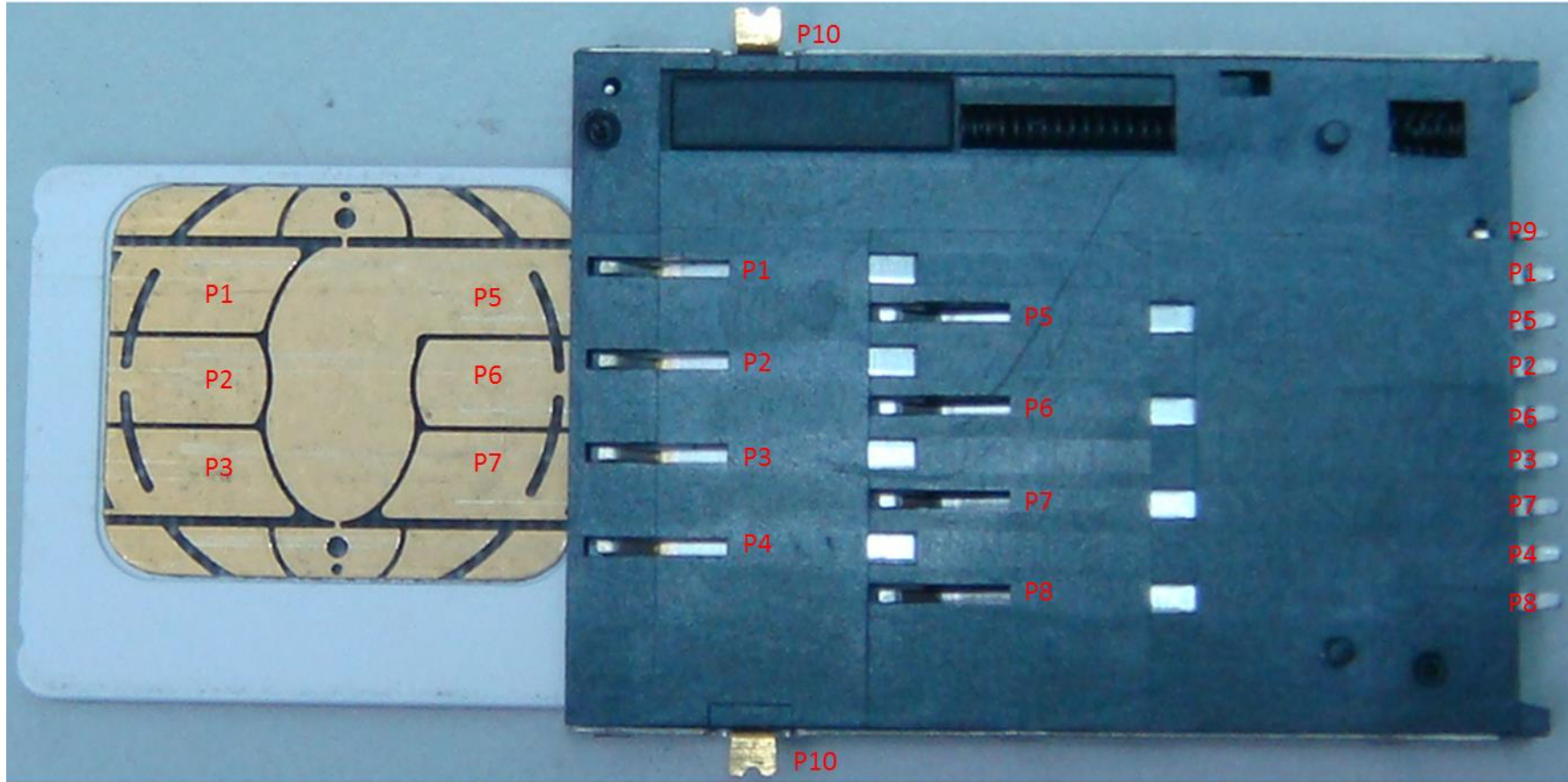
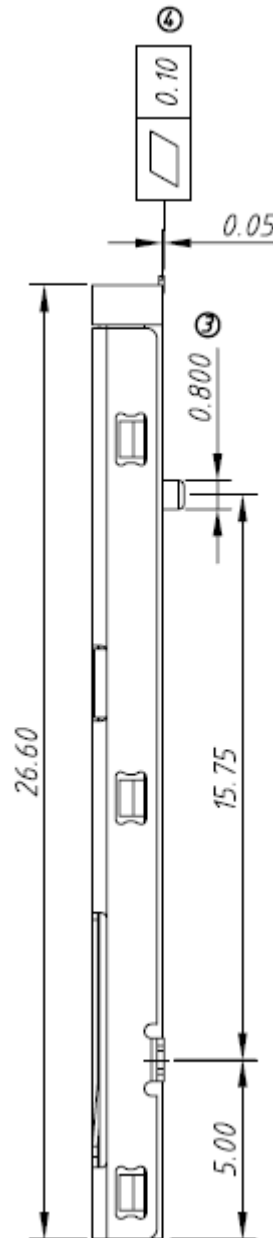
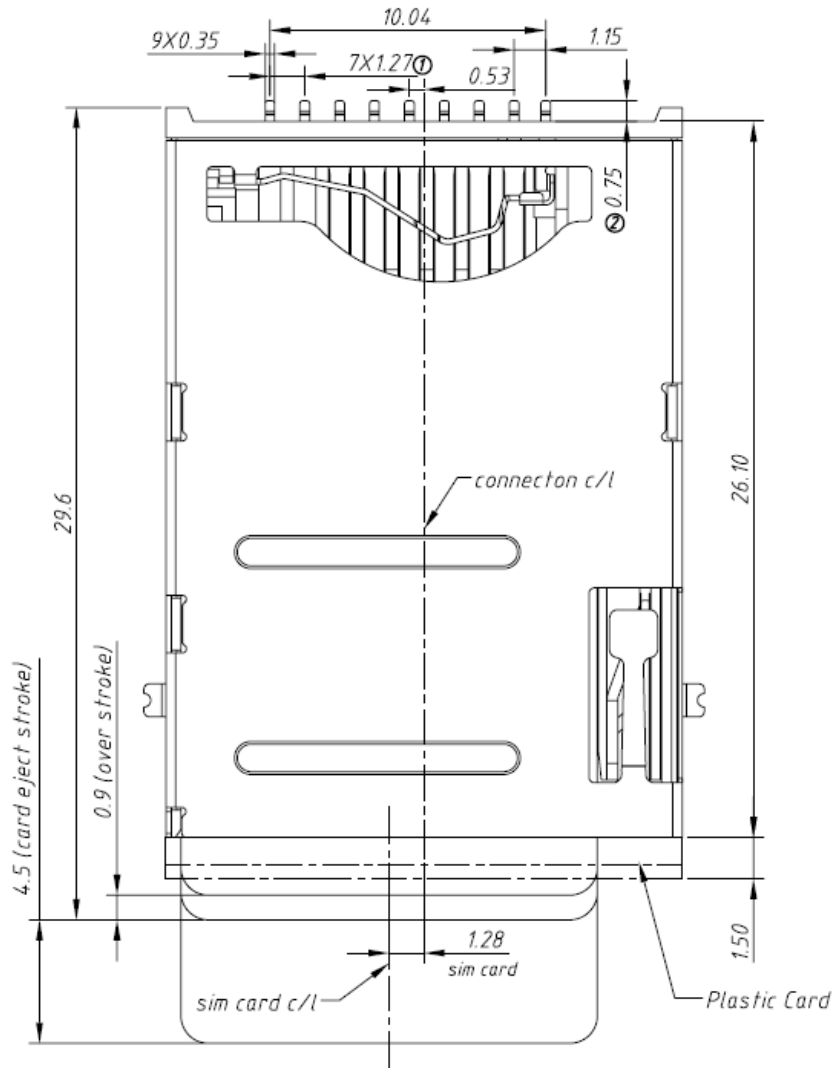


REYAX

SCHPP10 PUSH-PUSH SIM CARD HOLDER







### Specification

#### \*Electrical Characteristics

Current Rating : 0.5A

Withstanding Voltage : AC500V r. m. s.

Insulation Resistance : 1000M ohms Minimum at DC500V.

Contact Resistance : 100m ohms Maximum.

#### \*Mechanical Characteristics :

Matng Cyeles : 10000insertions

#### \*Environmental :

Operating Temperature : -40°C ~ 85°C

#### \*Material :

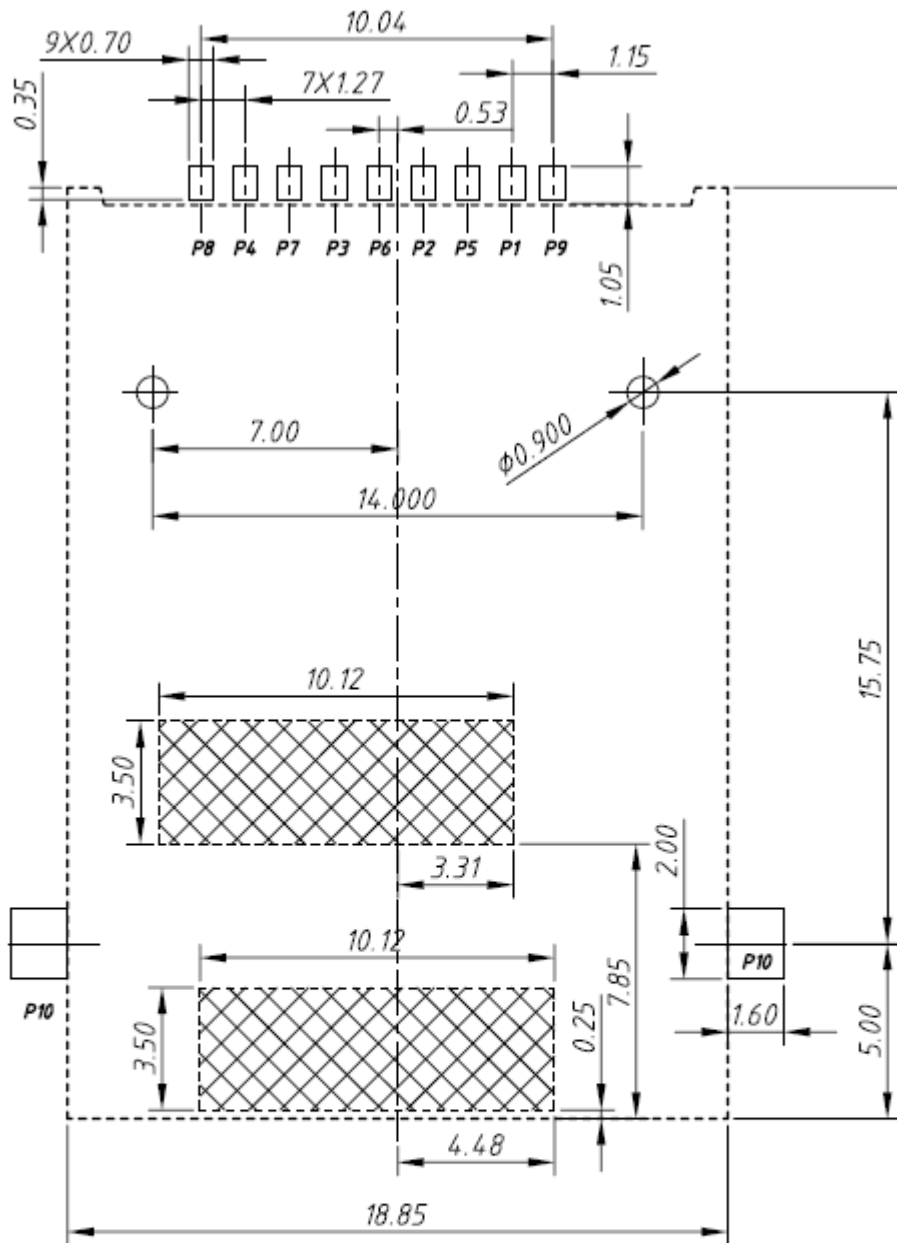
1. Housing : HI-Temp plastic UL 94V-0 Rated.

2. Contact : Copper Alloy.

3. Shell : Copper Alloy.

Can accord with management standards for

“environment-related substances to be controlled”



*RECOMMEENDER PCB LAYOUT  
TOLERANCE UNLESS OTHERWISE IS  $\pm 0.05$*

Connector Terminal NO.	Pin NO.
Pin1	VCC : PWR signal and GND
Pin2	RST : Reset signal
Pin3	CLK : Clocking signal
Pin4	Reserved
Pin5	GND: PWR signal and GND
Pin6	VPP : Programming Voltage
Pin7	I/O : Serial date input/output
Pin8	Reserved
Pin9	CD : CARD Detect Switch
Pin10	GND

